

## FLT1 Polyclonal Antibody

<b>Catalog No.</b>	A0058	<b>Category</b>	Polyclonal Antibodies
<b>Applications</b>	WB	<b>Observed MW</b>	43kDa
<b>Cross-reactivity</b>	Human	<b>Calculated MW</b>	39kDa/41kDa/52- 82kDa/150kDa

### Immunogen Information

<b>Immunogen</b>	A synthetic peptide corresponding to a sequence within amino acids 1100-1200 of human FLT1 (NP_002010.2).
<b>Gene ID</b>	2321
<b>Swiss prot</b>	P17948
<b>Synonyms</b>	FLT1; FLT; FLT-1; VEGFR-1; VEGFR1; fms related tyrosine kinase 1

### Product information

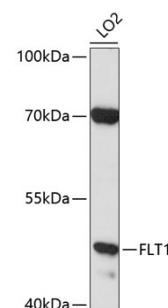
<b>Source</b>	Rabbit
<b>Isotype</b>	IgG
<b>Purification method</b>	Affinity purification
<b>Storage</b>	Store at -20°C. Avoid freeze / thaw cycles. Buffer: PBS with 0.02% sodium azide, 50% glycerol, pH7.3.

### Background

This gene encodes a member of the vascular endothelial growth factor receptor (VEGFR) family. VEGFR family members are receptor tyrosine kinases (RTKs) which contain an extracellular ligand-binding region with seven immunoglobulin (Ig)-like domains, a transmembrane segment, and a tyrosine kinase (TK) domain within the cytoplasmic domain. This protein binds to VEGFR-A, VEGFR-B and placental growth factor and plays an important role in angiogenesis and vasculogenesis. Expression of this receptor is found in vascular endothelial cells, placental trophoblast cells and peripheral blood monocytes. Multiple transcript variants encoding different isoforms have been found for this gene. Isoforms include a full-length transmembrane receptor isoform and shortened, soluble isoforms. The soluble isoforms are associated with the onset of pre-eclampsia.

### Recommended Dilutions

WB 1:200 -  
1:2000



Western blot - FLT1 Polyclonal Antibody (A0058)