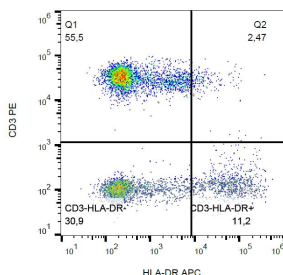


## Anti-HLA DR Antibody [L243] (APC) (A86732)

### Specifications:

Name:	Anti-HLA DR Antibody [L243] (APC)
Description:	Mouse monoclonal [L243] antibody to HLA DR (APC).
Specificity:	This antibody recognizes specifically an extracellular epitope on HLA DR molecules, both peptide-loaded and empty.
Applications:	Flow Cytometry
Recommended Dilutions:	Flow Cytometry: This reagent is designed for analysis of human blood cells using 10 µl reagent / 100 µl of whole blood or 10 <sup>6</sup> cells in a suspension.
Reactivity:	Human, Canine, Non-Human Primates
Immunogen:	Human B lymphocytes.
Host:	Mouse
Clonality:	Monoclonal
Clone ID:	L243
Isotype:	IgG2a
Light Chains:	kappa
Conjugate:	APC
Purification:	This antibody is conjugated with APC under optimum conditions. The conjugate is purified by size-exclusion chromatography.
Product Form:	Liquid
Formulation:	Supplied in Phosphate Buffered Saline with 15 mM Sodium Azide.
Storage:	Store in the dark at 2-8°C. Do not freeze!
Disclaimer:	This product is for research use only. It is not intended for diagnostic or therapeutic use.

### Images:



Surface staining of HLA-DR in human peripheral blood with Anti-HLA DR Antibody (A86732).