

ATF3 Polyclonal Antibody

Catalog No.	A13470	Category	Polyclonal Antibodies
Applications	WB	Observed MW	21kDa
Cross-reactivity	Human	Calculated MW	12kDa/13kDa/14kDa/15kDa/20kDa

Immunogen Information

Immunogen	Recombinant fusion protein containing a sequence corresponding to amino acids 1-181 of human ATF3 (NP_001665.1).
Gene ID	467
Swiss prot	P18847
Synonyms	ATF3; activating transcription factor 3

Product information

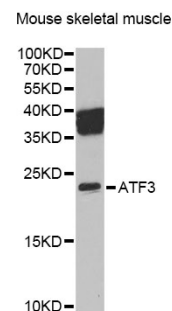
Source	Rabbit
Isotype	IgG
Purification method	Affinity purification
Storage	Store at -20°C. Avoid freeze / thaw cycles. Buffer: PBS with 0.02% sodium azide, 50% glycerol, pH7.3.

Background

This gene encodes a member of the mammalian activation transcription factor/cAMP responsive element-binding (CREB) protein family of transcription factors. This gene is induced by a variety of signals, including many of those encountered by cancer cells, and is involved in the complex process of cellular stress response. Multiple transcript variants encoding different isoforms have been found for this gene. It is possible that alternative splicing of this gene may be physiologically important in the regulation of target genes.

Recommended Dilutions

WB 1:500 -
1:2000



Western blot - ATF3 Polyclonal Antibody (A13470)