

## POLL Polyclonal Antibody

<b>Catalog No.</b>	A8408	<b>Category</b>	Polyclonal Antibodies
<b>Applications</b>	WB	<b>Observed MW</b>	63kDa
<b>Cross-reactivity</b>	Human, Mouse, Rat	<b>Calculated MW</b>	33kDa/63kDa

### Immunogen Information

<b>Immunogen</b>	Recombinant fusion protein containing a sequence corresponding to amino acids 421-575 of human POLL (NP_037406.1).
<b>Gene ID</b>	27343
<b>Swiss prot</b>	Q9UGP5
<b>Synonyms</b>	POLL; BETAN; POLKAPPA; DNA polymerase lambda

### Product information

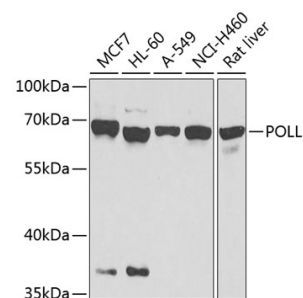
<b>Source</b>	Rabbit
<b>Isotype</b>	IgG
<b>Purification method</b>	Affinity purification
<b>Storage</b>	Store at -20°C. Avoid freeze / thaw cycles. Buffer: PBS with 0.02% sodium azide, 50% glycerol, pH7.3.

### Background

This gene encodes a DNA polymerase. DNA polymerases catalyze DNA-template-directed extension of the 3'-end of a DNA strand. This particular polymerase, which is a member of the X family of DNA polymerases, likely plays a role in non-homologous end joining and other DNA repair processes. Alternatively spliced transcript variants have been described.

### Recommended Dilutions

WB 1:500 -  
1:2000



Western blot - POLL Polyclonal Antibody (A8408)