

SGK1 Polyclonal Antibody

Catalog No.	A1025	Category	Polyclonal Antibodies
Applications	WB, IHC, IF	Observed MW	60kDa
Cross-reactivity	Human, Mouse, Rat	Calculated MW	47kDa/48kDa/50kDa/52kDa/59kDa

Immunogen Information

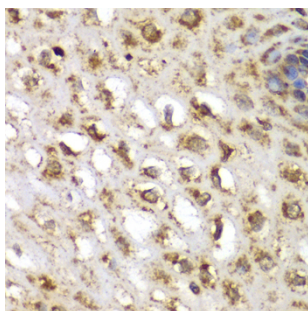
Immunogen	Recombinant fusion protein containing a sequence corresponding to amino acids 172-431 of human SGK1 (NP_005618.2).
Gene ID	6446
Swiss prot	O00141
Synonyms	SGK1; SGK; serine/threonine-protein kinase Sgk1

Product information

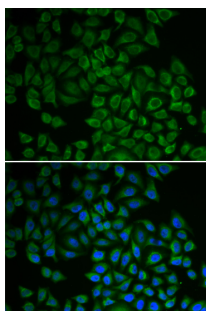
Source	Rabbit
Isotype	IgG
Purification method	Affinity purification
Storage	Store at -20°C. Avoid freeze / thaw cycles. Buffer: PBS with 0.02% sodium azide, 50% glycerol, pH7.3.

Background

This gene encodes a serine/threonine protein kinase that plays an important role in cellular stress response. This kinase activates certain potassium, sodium, and chloride channels, suggesting an involvement in the regulation of processes such as cell survival, neuronal excitability, and renal sodium excretion. High levels of expression of this gene may contribute to conditions such as hypertension and diabetic nephropathy. Several alternatively spliced transcript variants encoding different isoforms have been noted for this gene.



Immunohistochemistry - SGK1 Polyclonal Antibody (A1025)



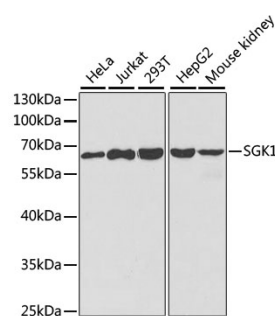
Immunofluorescence - SGK1 Polyclonal Antibody (A1025)

Recommended Dilutions

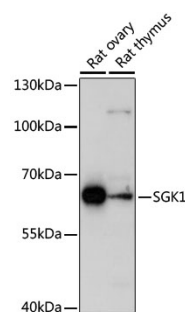
WB 1:500 -
1:2000

IHC 1:50 -
1:200

IF 1:50 -
1:200



Western blot - SGK1 Polyclonal Antibody (A1025)



Western blot - SGK1 Polyclonal Antibody (A1025)