

## HMGCL Polyclonal Antibody

|                         |       |                      |                       |
|-------------------------|-------|----------------------|-----------------------|
| <b>Catalog No.</b>      | A3915 | <b>Category</b>      | Polyclonal Antibodies |
| <b>Applications</b>     | WB    | <b>Observed MW</b>   | 34kDa                 |
| <b>Cross-reactivity</b> | Human | <b>Calculated MW</b> | 20kDa/26kDa/34kDa     |

### Immunogen Information

|                   |  |
|-------------------|--|
| <b>Immunogen</b>  | A synthetic peptide of human HMGCL                     |
| <b>Gene ID</b>    | 3155   |
| <b>Swiss prot</b> | P35914   |
| <b>Synonyms</b>   | HMGCL; HL; 3-hydroxymethyl-3-methylglutaryl-Co A lyase |

### Product information

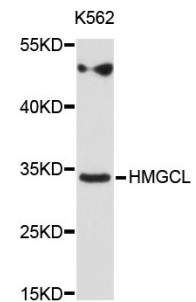
|                            |  |
|----------------------------|--|
| <b>Source</b>              | Rabbit   |
| <b>Isotype</b>             | IgG  |
| <b>Purification method</b> | Affinity purification  |
| <b>Storage</b>             | Store at 4°C. Avoid freeze / thaw cycles.<br>Buffer: PBS with 0.02% sodium azide, pH7.3. |

### Background

The protein encoded by this gene belongs to the HMG-CoA lyase family. It is a mitochondrial enzyme that catalyzes the final step of leucine degradation and plays a key role in ketone body formation. Mutations in this gene are associated with HMG-CoA lyase deficiency. Alternatively spliced transcript variants encoding different isoforms have been found for this gene.

### Recommended Dilutions

WB 1:500 -  
1:1000



Western blot - HMGCL Polyclonal Antibody (A3915)