

POLI Polyclonal Antibody

Catalog No.	A1942	Category	Polyclonal Antibodies
Applications	WB	Observed MW	85kDa
Cross-reactivity	Human, Mouse	Calculated MW	83kDa

Immunogen Information

Immunogen	Recombinant fusion protein containing a sequence corresponding to amino acids 50-350 of human POLI (NP_009126.2).
Gene ID	11201
Swiss prot	Q9UNA4
Synonyms	POLI; RAD30B; RAD30B; eta2; DNA polymerase iota

Product information

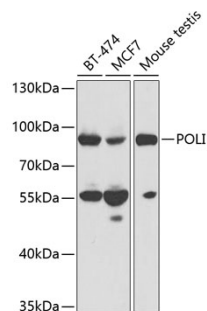
Source	Rabbit
Isotype	IgG
Purification method	Affinity purification
Storage	Store at -20°C. Avoid freeze / thaw cycles. Buffer: PBS with 0.02% sodium azide, 50% glycerol, pH7.3.

Background

The protein encoded by this gene is an error-prone DNA polymerase involved in DNA repair. The encoded protein promotes DNA synthesis across lesions in the template DNA, which other polymerases cannot do. The encoded polymerase inserts deoxynucleotides across lesions and then relies on DNA polymerase zeta to extend the nascent DNA strand to bypass the lesion.

Recommended Dilutions

WB 1:500 -
1:2000



Western blot - POLI Polyclonal Antibody (A1942)