

MRC1 Polyclonal Antibody

Catalog No.	A8301	Category	Polyclonal Antibodies
Applications	WB, IHC	Observed MW	166kDa
Cross-reactivity	Human, Mouse, Rat	Calculated MW	56kDa/166kDa

Immunogen Information

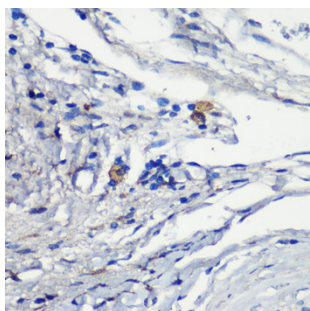
Immunogen	Recombinant fusion protein containing a sequence corresponding to amino acids 610-860 of human MRC1 (NP_002429.1).
Gene ID	4360
Swiss prot	P22897
Synonyms	MRC1; CD206; CLEC13D; CLEC13DL; MMR; MRC1L1; bA541I19.1; hMR; mannose receptor C-type 1

Product information

Source	Rabbit
Isotype	IgG
Purification method	Affinity purification
Storage	Store at -20°C. Avoid freeze / thaw cycles. Buffer: PBS with 0.02% sodium azide, 50% glycerol, pH7.3.

Background

The recognition of complex carbohydrate structures on glycoproteins is an important part of several biological processes, including cell-cell recognition, serum glycoprotein turnover, and neutralization of pathogens. The protein encoded by this gene is a type I membrane receptor that mediates the endocytosis of glycoproteins by macrophages. The protein has been shown to bind high-mannose structures on the surface of potentially pathogenic viruses, bacteria, and fungi so that they can be neutralized by phagocytic engulfment.

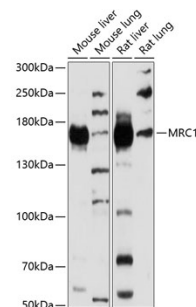


Immunohistochemistry - MRC1 Polyclonal Antibody (A8301)

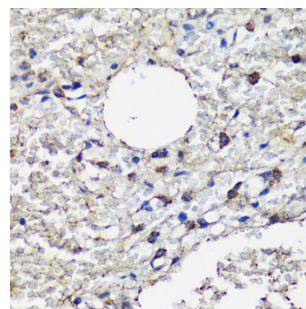
Recommended Dilutions

WB 1:500 -
1:2000

IHC 1:50 -
1:200



Western blot - MRC1 Polyclonal Antibody (A8301)



Immunohistochemistry - MRC1 Polyclonal Antibody (A8301)