

## LAMTOR1 Polyclonal Antibody

<b>Catalog No.</b>	A11619	<b>Category</b>	Polyclonal Antibodies
<b>Applications</b>	WB, IHC, IF	<b>Observed MW</b>	18kDa
<b>Cross-reactivity</b>	Human, Mouse, Rat	<b>Calculated MW</b>	17kDa

### Immunogen Information

<b>Immunogen</b>	Recombinant fusion protein containing a sequence corresponding to amino acids 1-161 of human LAMTOR1 (NP_060377.1).
<b>Gene ID</b>	55004
<b>Swiss prot</b>	Q6IAA8
<b>Synonyms</b>	LAMTOR1; C11orf59; PDRO; Ragulator1; p18; p27R F-Rho; ragulator complex protein LAMTOR1

### Product information

<b>Source</b>	Rabbit
<b>Isotype</b>	IgG
<b>Purification method</b>	Affinity purification
<b>Storage</b>	Store at -20°C. Avoid freeze / thaw cycles. Buffer: PBS with 0.02% sodium azide, 50% glycerol, pH7.3.

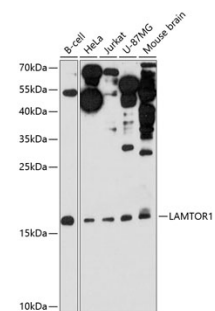
### Background

### Recommended Dilutions

WB 1:500 -  
1:1000

IHC 1:50 -  
1:100

IF 1:50 -  
1:100



Western blot - LAMTOR1 Polyclonal Antibody (A11619)