

MSLN Polyclonal Antibody

Catalog No.	A14099	Category	Polyclonal Antibodies
Applications	WB, IHC, IF	Observed MW	Refer to figures
Cross-reactivity	Human, Rat	Calculated MW	67kDa/68kDa/71kDa

Immunogen Information

Immunogen	Recombinant fusion protein containing a sequence corresponding to amino acids 37-296 of human MSLN (NP_001170826.1).
Gene ID	10232
Swiss prot	Q13421
Synonyms	MSLN; MPF; SMRP; mesothelin

Product information

Source	Rabbit
Isotype	IgG
Purification method	Affinity purification
Storage	Store at -20°C. Avoid freeze / thaw cycles. Buffer: PBS with 0.02% sodium azide, 50% glycerol, pH7.3.

Background

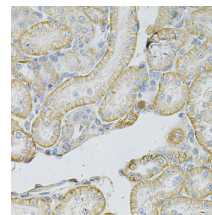
This gene encodes a preproprotein that is proteolytically processed to generate two protein products, megakaryocyte potentiating factor and mesothelin. Megakaryocyte potentiating factor functions as a cytokine that can stimulate colony formation of bone marrow megakaryocytes. Mesothelin is a glycosylphosphatidylinositol-anchored cell-surface protein that may function as a cell adhesion protein. This protein is overexpressed in epithelial mesotheliomas, ovarian cancers and in specific squamous cell carcinomas. Alternative splicing results in multiple transcript variants, at least one of which encodes an isoform that is proteolytically processed.

Recommended Dilutions

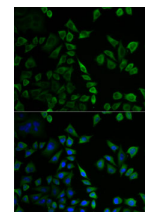
WB 1:500 - 1:2000

IHC 1:50 - 1:200

IF 1:50 - 1:100



Immunohistochemistry - MSLN Polyclonal Antibody (A14099)



Immunofluorescence - MSLN Polyclonal Antibody (A14099)