

Anti-Cytokeratin 5 Antibody [KRT5/4245R] (A249126)

Specifications:

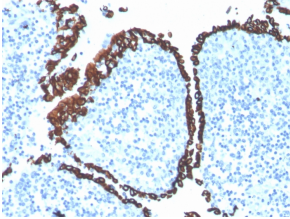
Name:	Anti-Cytokeratin 5 Antibody [KRT5/4245R]
Description:	Recombinant rabbit monoclonal [KRT5/4245R] antibody to Cytokeratin 5.
Specificity:	<p>This antibody recognizes a protein of 58kDa, which is identified as Cytokeratin 5 (KRT5). This type II cytokeratin is specifically expressed in the basal layer of the epidermis with family member KRT14. Antibodies to KRT5 identify basal cells of squamous and glandular epithelia, myoepithelia, and mesothelium. Anti-cytokeratin 5 has been reported useful in the differential diagnosis of metastatic carcinoma in the pleura versus epithelioid mesothelioma. Almost all squamous cell carcinomas, half of transitional carcinomas, and many undifferentiated large cell carcinomas express. Anti-KRT5, along with anti-p63, affords a high sensitivity and specificity for squamous differentiation. Myoepithelial cells of the breast, glandular epithelia, and basal cells of the prostate are labeled with anti-KRT5.</p>
Applications:	IHC-P
Recommended Dilutions:	IHC-P: 1-2 µg/ml
Reactivity:	Human
Immunogen:	Recombinant fragment, around amino acids 490-590, corresponding to C terminal of human Cytokeratin 5.
Host:	Rabbit
Clonality:	Monoclonal
Clone ID:	KRT5/4245R
Isotype:	IgG
Conjugate:	Unconjugated
Purification:	Protein A/G chromatography.
Concentration:	200 µg/ml
Product Form:	Liquid
Formulation:	Supplied in 10mM Phosphate Buffered Saline with 0.05% BSA and 0.05% Sodium Azide.
Storage:	Shipped at 4°C. Upon delivery aliquot and store at -20°C. Avoid freeze / thaw cycles.
General Notes:	This monoclonal antibody is also available in a different formulation without BSA and Sodium Azide - Anti-Cytokeratin 5 Antibody [KRT5/4245R] - BSA and Azide free (A252306).

Anti-Cytokeratin 5 Antibody [KRT5/4245R] (A249126)

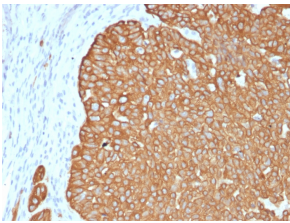
Specifications continued:

Disclaimer: This product is for research use only. It is not intended for diagnostic or therapeutic use.

Images:



Immunohistochemical analysis of formalin-fixed, paraffin-embedded human tonsil using Anti-Cytokeratin 5 Antibody [KRT5/4245R].



Immunohistochemical analysis of formalin-fixed, paraffin-embedded human basal cell carcinoma using Anti-Cytokeratin 5 Antibody [KRT5/4245R].