

Phospho-ESR1-S167 pAb

Catalog No.	AP0348	Category	Phosphorylated Antibodies
Applications	WB, IHC, IF	Observed MW	66kDa
Cross-reactivity	Human, Mouse	Calculated MW	35kDa/47kDa/53kDa/66kDa

Immunogen Information

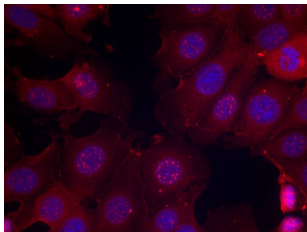
Immunogen	A phospho specific peptide corresponding to residues surrounding S167 of human ESR1
Gene ID	2099
Swiss prot	P03372
Synonyms	ESR1; ER; ESR; ESRA; ESTRR; Era; NR3A1; estrogen receptor

Product information

Source	Rabbit
Isotype	IgG
Purification method	Affinity purification
Storage	Store at -20°C. Avoid freeze / thaw cycles. Buffer: PBS with 0.02% sodium azide, 50% glycerol, pH7.3.

Background

This gene encodes an estrogen receptor, a ligand-activated transcription factor composed of several domains important for hormone binding, DNA binding, and activation of transcription. The protein localizes to the nucleus where it may form a homodimer or a heterodimer with estrogen receptor 2. Estrogen and its receptors are essential for sexual development and reproductive function, but also play a role in other tissues such as bone. Estrogen receptors are also involved in pathological processes including breast cancer, endometrial cancer, and osteoporosis. Alternative promoter usage and alternative splicing result in dozens of transcript variants, but the full-length nature of many of these variants has not been determined.



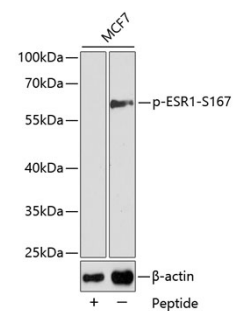
Immunofluorescence - Phospho-ESR1-S167 pAb (AP0348)

Recommended Dilutions

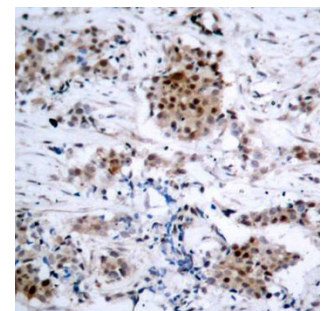
WB 1:500 -
1:2000

IHC 1:50 -
1:100

IF 1:100 -
1:200



Western blot - Phospho-ESR1-S167 pAb (AP0348)



Immunohistochemistry - Phospho-ESR1-S167 pAb (AP0348)