

CDK10 Polyclonal Antibody

Catalog No.	A2690	Category	Polyclonal Antibodies
Applications	WB, IHC, IF	Observed MW	46kDa
Cross-reactivity	Human, Mouse	Calculated MW	17kDa/21kDa/30kDa/31kDa/32kDa/41kDa

Immunogen Information

Immunogen	Recombinant fusion protein containing a sequence corresponding to amino acids 1-283 of human CDK10 (NP_001092003.2).
Gene ID	8558
Swiss prot	Q15131
Synonyms	CDK10; PISSLRE; cyclin-dependent kinase 10

Product information

Source	Rabbit
Isotype	IgG
Purification method	Affinity purification
Storage	Store at -20°C. Avoid freeze / thaw cycles. Buffer: PBS with 0.02% sodium azide, 50% glycerol, pH7.3.

Background

The protein encoded by this gene belongs to the CDK subfamily of the Ser/Thr protein kinase family. The CDK subfamily members are highly similar to the gene products of *S. cerevisiae* cdc28, and *S. pombe* cdc2, and are known to be essential for cell cycle progression. This kinase has been shown to play a role in cellular proliferation and its function is limited to cell cycle G2-M phase. Multiple transcript variants encoding different isoforms have been found for this gene.



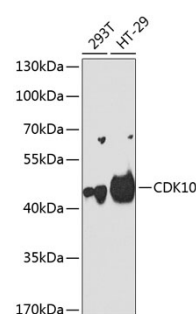
Immunofluorescence - CDK10
Polyclonal Antibody (A2690)

Recommended Dilutions

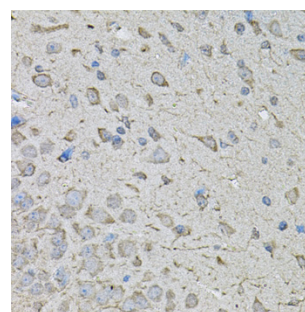
WB 1:500 -
1:2000

IHC 1:50 -
1:200

IF 1:50 -
1:200



Western blot - CDK10 Polyclonal Antibody (A2690)



Immunohistochemistry - CDK10 Polyclonal Antibody (A2690)