

## Anti-HCG Holo Antibody [HCGab/52] - BSA and Azide free (A254063)

### Specifications:

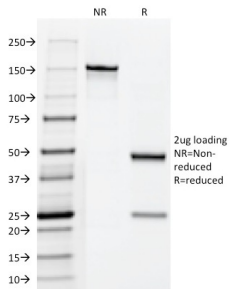
Name:	Anti-HCG Holo Antibody [HCGab/52] - BSA and Azide free
Description:	Mouse monoclonal [HCGab/52] antibody to HCG Holo.
Specificity:	This antibody is a very special because it reacts ONLY with the intact-HCG and not with either free alpha- or free beta-chain of HCG. HCG is a glycoprotein and is composed of two non-identical, non-covalently linked polypeptide chains designated as the subunit is identical to that of thyroid stimulating hormone (TSH) follicle stimulating hormone (FSH), and luteinizing hormone (LH). HCG is secreted in large quantities by normal trophoblasts. It is present only in trace amounts in non-pregnant urine and sera but rises sharply during pregnancy. HCG MAb detects cells and tumors of trophoblastic origin such as choriocarcinoma. Large cell carcinoma and adenocarcinoma of the lung demonstrate anti-hCG positivity in 90% and 60% of cases respectively. 20% of lung squamous cell carcinomas are positive. HCG expression by non-trophoblastic tumors may indicate aggressive behavior.
Applications:	IHC-P
Recommended Dilutions:	IHC-P: 1-2 µg/ml
Reactivity:	Human
Immunogen:	Purified hCG protein.
Host:	Mouse
Clonality:	Monoclonal
Clone ID:	HCGab/52
Isotype:	IgG1
Light Chains:	kappa
Conjugate:	Unconjugated
Purification:	Protein A/G chromatography.
Concentration:	1 mg/ml
Product Form:	Liquid
Formulation:	Supplied in 10mM Phosphate Buffered Saline; without Sodium Azide and carrier free.
Storage:	Shipped at 4°C. Upon delivery aliquot and store at -20°C. Avoid freeze / thaw cycles.
General Notes:	This monoclonal antibody is also available in a different formulation with BSA and Sodium Azide - Anti-HCG Holo Antibody [HCGab/52] (A250883).

## Anti-HCG Holo Antibody [HCGab/52] - BSA and Azide free (A254063)

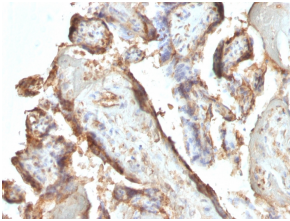
### Specifications continued:

**Disclaimer:** This product is for research use only. It is not intended for diagnostic or therapeutic use.

### Images:



SDS-PAGE analysis of Anti-HCG Holo Antibody [HCGab/52] under non-reduced and reduced conditions; showing intact IgG and intact heavy and light chains, respectively. SDS-PAGE analysis confirms the integrity and purity of the antibody.



Immunohistochemical analysis of formalin-fixed, paraffin-embedded human placenta using Anti-HCG Holo Antibody [HCGab/52].