

## E2F8 Polyclonal Antibody

<b>Catalog No.</b>	A1135	<b>Category</b>	Polyclonal Antibodies
<b>Applications</b>	WB	<b>Observed MW</b>	82kDa
<b>Cross-reactivity</b>	Human, Mouse, Rat	<b>Calculated MW</b>	94kDa

### Immunogen Information

<b>Immunogen</b>	Recombinant fusion protein containing a sequence corresponding to amino acids 1-240 of human E2F8 (NP_078956.2).
<b>Gene ID</b>	79733
<b>Swiss prot</b>	A0AVK6
<b>Synonyms</b>	E2F8; E2F-8; transcription factor E2F8

### Product information

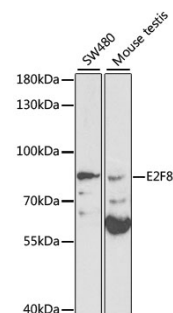
<b>Source</b>	Rabbit
<b>Isotype</b>	IgG
<b>Purification method</b>	Affinity purification
<b>Storage</b>	Store at -20°C. Avoid freeze / thaw cycles. Buffer: PBS with 0.02% sodium azide, 50% glycerol, pH7.3.

### Background

This gene encodes a member of a family of transcription factors which regulate the expression of genes required for progression through the cell cycle. The encoded protein regulates progression from G1 to S phase by ensuring the nucleus divides at the proper time. Multiple alternatively spliced variants, encoding the same protein, have been identified.

### Recommended Dilutions

WB 1:500 -  
1:2000



Western blot - E2F8 Polyclonal Antibody (A1135)