

Catalogue No. AB0043

Cathepsin D Polyclonal Antibody

Source: Goat

General description: Goat polyclonal antibody to Cathepsin D. Cathepsin D is a lysosomal aspartic protease of the pepsin family. Acid protease active in intracellular protein breakdown. It is composed of a dimer of disulphide-linked heavy and light chains, both produced from a single protein precursor. It is involved in the pathogenesis of several diseases such as breast cancer and possibly Alzheimer disease.

Alternative names: ceroid-lipofuscinosis, CLN10; CPSD, CTSD, lysosomal aspartyl protease, lysosomal aspartyl peptidase, neuronal 10 antibody.

Form: Polyclonal antibody supplied as a 500 µl (3 mg/ml) aliquot in PBS, 20% glycerol and 0.05% sodium azide. This antibody is epitope-affinity purified from goat antiserum.

Immunogen: Purified recombinant peptide derived from within residues 275 aa to the C-terminus of human Cathepsin D produced in *E. coli*.

Specificity: This antibody gives a positive signal in the following human (Jurkat, HT1080, HUH, MDA-MB-231, ARPE19, SH-SY5Y), canine (MDCK) and monkey (COS-7) whole cell lysates.

Reactivity: Reacts against human, rat, mouse, canine and monkey proteins.

Sample	Western blot	Immuno-fluorescence	Histochemistry (paraffin)	Histochemistry (frozen)	IEM
human	+++	+++	+++	+++	+++
rat	+++	+++	+++	+++	+++
mouse	+++	+++	+++	+++	+++
canine	+++	+++	+++	+++	+++
monkey	+++	+++	+++	+++	+++

+++ excellent, ++ good, + poor, ND not determined

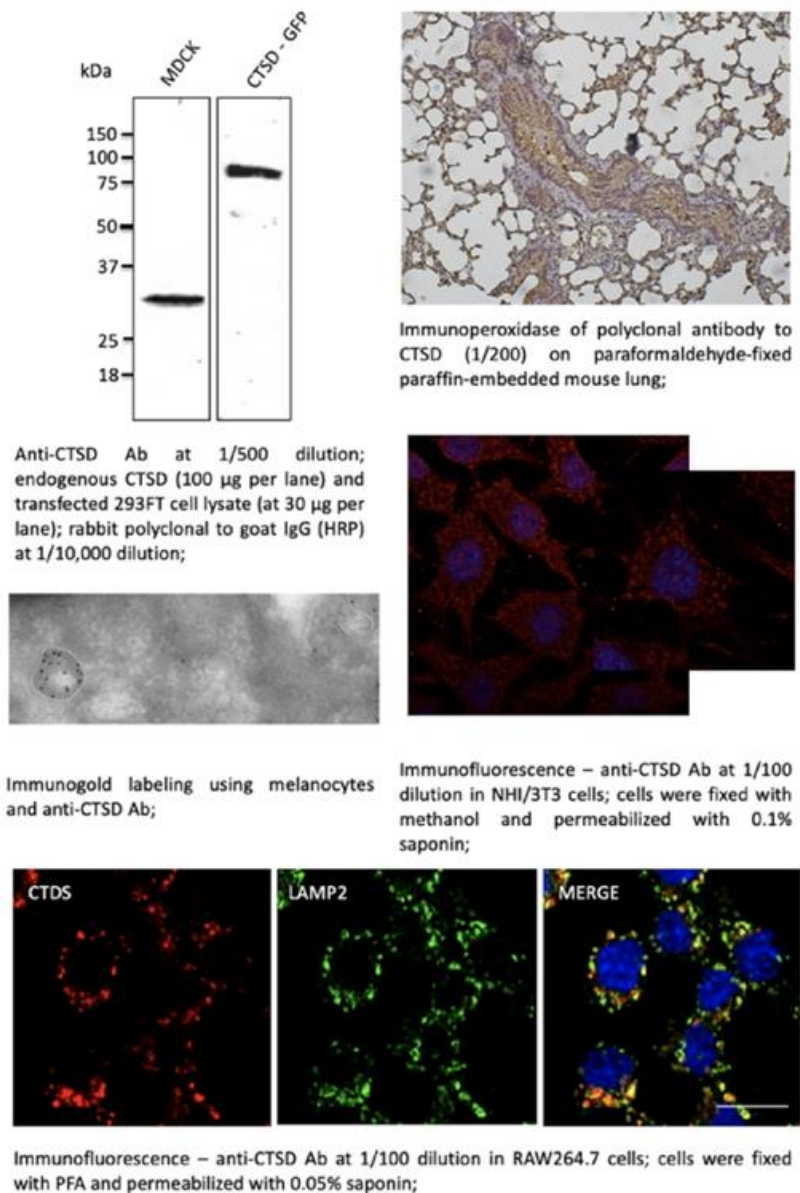
Usage: Western blot 1:250-1:1,000
Immunofluorescence 1:50-1:200
Immunohistochemistry (paraffin) 1:50-1:200
Immunohistochemistry (frozen) 1:50-1:200
IEM 1:50-1:200

Storage: Store at -20 C for long term storage. Store at 2-8 C for up to one month.

Special instructions: Avoid freeze/thaw cycles.

References:

1. Pelkonen L, Sato K, Reinisalo M, et al. *Mol Pharm.* 2017 Mar 6. PMID:28112518



For research use only, not for diagnostic use