

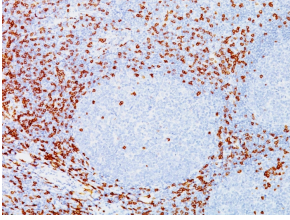
Anti-CD8A Antibody [C8/144B] (A250558)

Specifications:

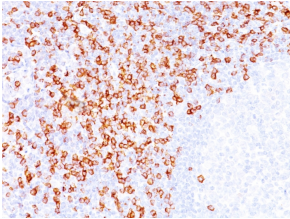
Name:	Anti-CD8A Antibody [C8/144B]
Description:	Mouse monoclonal [C8/144B] antibody to CD8A.
Applications:	Flow Cytometry, IF, IHC-P
Recommended Dilutions:	Flow Cytometry: 1-2 µg/million cells, IF: 1-2 µg/ml, IHC-P: 1-2 µg/ml
Reactivity:	Human
Immunogen:	Synthetic peptide corresponding to 13 amino acids from the C terminal cytoplasmic domain of alpha chain of human CD8 protein.
Host:	Mouse
Clonality:	Monoclonal
Clone ID:	C8/144B
Isotype:	IgG1
Light Chains:	kappa
Conjugate:	Unconjugated
Purification:	Protein A/G chromatography.
Concentration:	200 µg/ml
Product Form:	Liquid
Formulation:	Supplied in 10mM Phosphate Buffered Saline with 0.05% BSA and 0.05% Sodium Azide.
Storage:	Shipped at 4°C. Upon delivery aliquot and store at -20°C. Avoid freeze / thaw cycles.
General Notes:	This monoclonal antibody is also available in a different formulation without BSA and Sodium Azide - Anti-CD8A Antibody [C8/144B] - BSA and Azide free (A253738).
Disclaimer:	This product is for research use only. It is not intended for diagnostic or therapeutic use.

Anti-CD8A Antibody [C8/144B] (A250558)

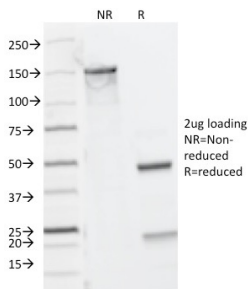
Images:



Immunohistochemical analysis of formalin-fixed, paraffin-embedded human tonsil using Anti-CD8A Antibody [C8/144B].



Immunohistochemical analysis of formalin-fixed, paraffin-embedded human tonsil using Anti-CD8A Antibody [C8/144B].



SDS-PAGE analysis of Anti-CD8A Antibody [C8/144B] under non-reduced and reduced conditions; showing intact IgG and intact heavy and light chains, respectively. SDS-PAGE analysis confirms the integrity and purity of the antibody.