

WBSCR27 Polyclonal Antibody

Catalog No.	A16176	Category	Polyclonal Antibodies
Applications	WB	Observed MW	26kDa
Cross-reactivity	Human, Mouse	Calculated MW	26kDa

Immunogen Information

Immunogen	Recombinant fusion protein containing a sequence corresponding to amino acids 1-245 of human WBSCR27 (NP_689772.2).
Gene ID	155368
Swiss prot	Q8N6F8
Synonyms	METTL27; WBSCR27; methyltransferase like 27

Product information

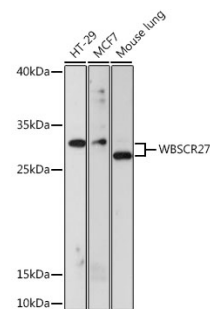
Source	Rabbit
Isotype	IgG
Purification method	Affinity purification
Storage	Store at -20°C. Avoid freeze / thaw cycles. Buffer: PBS with 0.02% sodium azide, 50% glycerol, pH7.3.

Background

This gene encodes a protein belonging to ubiE/COQ5 methyltransferase family. The gene is deleted in Williams syndrome, a multisystem developmental disorder caused by the deletion of contiguous genes at 7q11.22-q11.23.

Recommended Dilutions

WB 1:500 -
1:2000



Western blot - WBSCR27 Polyclonal Antibody (A16176)