

## IWS1 Polyclonal Antibody

<b>Catalog No.</b>	A7375	<b>Category</b>	Polyclonal Antibodies
<b>Applications</b>	WB	<b>Observed MW</b>	92kDa
<b>Cross-reactivity</b>	Human, Mouse, Rat	<b>Calculated MW</b>	56kDa/69kDa/91kDa

### Immunogen Information

<b>Immunogen</b>	Recombinant fusion protein containing a sequence corresponding to amino acids 570-819 of human IWS1 (NP_060439.2).
<b>Gene ID</b>	55677
<b>Swiss prot</b>	Q96ST2
<b>Synonyms</b>	IWS1; protein IWS1 homolog

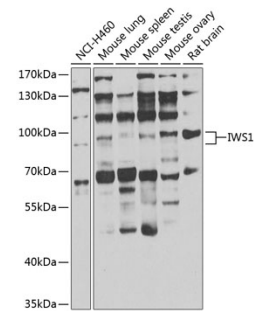
### Product information

<b>Source</b>	Rabbit
<b>Isotype</b>	IgG
<b>Purification method</b>	Affinity purification
<b>Storage</b>	Store at -20°C. Avoid freeze / thaw cycles. Buffer: PBS with 0.02% sodium azide, 50% glycerol, pH7.3.

### Background

### Recommended Dilutions

WB 1:500 -  
1:2000



Western blot - IWS1 Polyclonal Antibody (A7375)