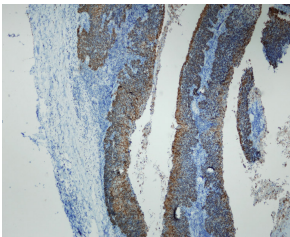


## Anti-p16 Antibody [R19-D] (A8237)

### Specifications:

Name:	Anti-p16 Antibody [R19-D]
Description:	Rabbit monoclonal (R19-D) antibody to p16.
Applications:	IHC-P, IHC-Fr
Recommended Dilutions:	IHC: 1:100.
Reactivity:	Human
Immunogen:	Peptide derived from C-terminal sequence of human p16.
Host:	Rabbit
Clonality:	Monoclonal
Clone ID:	R19-D
Isotype:	IgG
Conjugate:	Unconjugated
Product Form:	Liquid
Formulation:	Supplied in Tris Buffered Saline, pH 8.0, with 20 mg/ml BSA and 0.05% Sodium Azide.
Storage:	Store at 4°C.
Disclaimer:	This product is for research use only. It is not intended for diagnostic or therapeutic use.

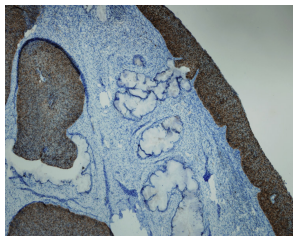
### Images:



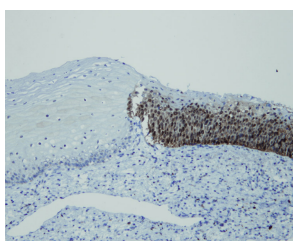
Cervical lymph node metastasis of oropharyngeal HPV-associated squamous cell carcinoma stained with Anti-p16 Antibody (A8237). Shows strong and specific positive immunostaining of dysplastic and neoplastic epithelium, with no reactivity in normal epithelial and stromal structures. Formalin fixed, paraffin embedded human tissues (4µm sections) stained.

## Anti-p16 Antibody [R19-D] (A8237)

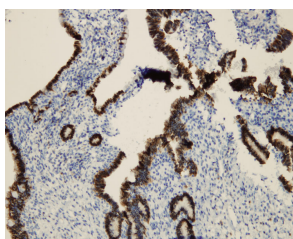
Images continued:



High grade squamous intraepithelial lesion of the uterine cervix (in contrast with normal endocervical glands) stained with Anti-p16 Antibody (A8237). Shows strong and specific positive immunostaining of dysplastic and neoplastic epithelium, with no reactivity in normal epithelial and stromal structures. Formalin fixed, paraffin embedded human tissues (4µm sections) stained.



High grade squamous intraepithelial lesion of the uterine cervix (in contrast with non-dysplastic metaplastic squamous epithelium). Shows strong and specific positive immunostaining of dysplastic and neoplastic epithelium, with no reactivity in normal epithelial and stromal structures. Formalin fixed, paraffin embedded human tissues (4µm sections) stained with Anti-p16 Antibody (A8237).



Adenocarcinoma in situ of the uterine cervix, stained with Anti-p16 Antibody (A8237). Shows strong and specific positive immunostaining of dysplastic and neoplastic epithelium, with no reactivity in normal epithelial and stromal structures. Formalin fixed, paraffin embedded human tissues (4µm sections) stained.