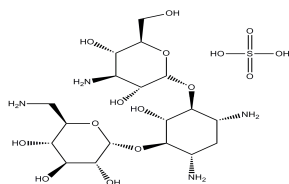


Product: Kanamycin Sulfate, USP

ALTERNATE NAME: Ophthalmokalixan

CATALOG #: 2498-5G, 25G

AMOUNT: 5 g, 25 g

**STRUCTURE:**MOLECULAR FORMULA: $C_{18}H_{36}N_4O_{11} \cdot H_2SO_4$

MOLECULAR WEIGHT: 582.58

CAS No. 25389-94-0

APPEARANCE: White to off-white powder

SOLUBILITY: H_2O (~ 50 mg/ml)

PURITY: >95%

STORAGE: Store at +4°C. Protect from air and moisture

DESCRIPTION: Kanamycin, USP is an aminoglycoside antibiotic often used to select for bacteria which have been successfully transformed with a plasmid conferring kanamycin resistance. Kanamycin interacts with the 30S subunit of prokaryotic ribosomes thereby inhibiting translocation during protein synthesis. Kanamycin can be used as a selection agent in several types of isolation media.

HANDLING: Do not take internally. Wear gloves and mask when handling the product! Avoid contact by all modes of exposure.

RELATED PRODUCTS:

Amphotericin B (Cat. No. 2497-250, 1G, 5G)
Ampicillin trihydrate (Cat. No. 2483-1 G, 5G, 25 G)
Ampicillin sodium (Cat. No. 2484-1G, 5G, 25G)
Betulinic Acid (Cat. No. 1552-25)
Bexarotene (Cat. No. 1575-5, 50)
Blasticidin S, Hydrochloride (Cat. No. 1859-25,100)
Capecitabine (Cat. No. 1741-100, 1000)
Carboplatin (Cat. No. 1553-100)
Chloramphenicol (Cat. No. 2486-25G, 100G, 500G)
Cisplatin (Cat. No. 1550-100,1000)
Cycloheximide (Cat. No. 1041-1G, 5G)
Cycloheximide (100 mM) (Cat. No. 1041-1)
Daunorubicin.HCl (1524-10,50,500)
Doxorubicin HCl (Cat. No. 1527-5)
Fludarabine Phosphate (Cat. No. 1763-10, 50)
G-418 Sulfate (Cat. No. 1557-100, 5G, 25G)
Gemcitabine Hydrochloride (Cat. No. 1759-25, 100)
Genistein (Cat. No. 1533-10)
Nedaplatin (Cat. No. 1576-5)
Oxaliplatin (Cat. No. 1577-25)
Paclitaxel (Cat. No. 1567-25)
Polymyxin B Sulfate (Cat. No. 2496-10, 50, 100)
Puromycin DiHydrochloride (Cat. No. 1860-25, 100, 250, 500,1000)
EZSolution™ Puromycin Dihydrochloride (Cat. No. 1861-100)
Streptozocin (Cat. No. 1930-100, 500, 1000)
Tamoxifen Citrate (Cat. No. 1551-1000)

FOR RESEARCH USE ONLY! Not to be used in humans.