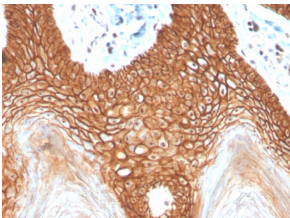


Anti-E Cadherin Antibody [CDH1/4398R] - BSA and Azide free (A254009)

Specifications:

Name:	Anti-E Cadherin Antibody [CDH1/4398R] - BSA and Azide free
Description:	Recombinant rabbit monoclonal [CDH1/4398R] antibody to E Cadherin.
Applications:	IHC-P
Recommended Dilutions:	IHC-P: 1-2 µg/ml
Reactivity:	Human
Immunogen:	Synthetic peptide corresponding to amino acids within 600-700 of E Cadherin.
Host:	Rabbit
Clonality:	Monoclonal
Clone ID:	CDH1/4398R
Isotype:	IgG
Conjugate:	Unconjugated
Purification:	Protein A/G chromatography.
Concentration:	1 mg/ml
Product Form:	Liquid
Formulation:	Supplied in 10mM Phosphate Buffered Saline; without Sodium Azide and carrier free.
Storage:	Shipped at 4°C. Upon delivery aliquot and store at -20°C. Avoid freeze / thaw cycles.
General Notes:	This monoclonal antibody is also available in a different formulation with BSA and Sodium Azide - Anti-E Cadherin Antibody [CDH1/4398R] (A250829).
Disclaimer:	This product is for research use only. It is not intended for diagnostic or therapeutic use.

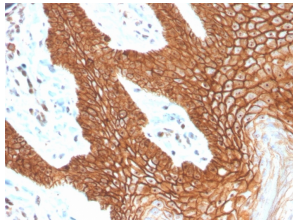
Images:



Immunohistochemical analysis of formalin-fixed, paraffin-embedded human cervix using Anti-E Cadherin Antibody [CDH1/4398R].

Anti-E Cadherin Antibody [CDH1/4398R] - BSA and Azide free (A254009)

Images continued:



Immunohistochemical analysis of formalin-fixed, paraffin-embedded human cervix using Anti-E Cadherin Antibody [CDH1/4398R].



Analysis of protein array containing more than 19,000 full-length human proteins using Anti-E Cadherin Antibody [CDH1/4398R]. Z-Score and S- Score: The Z-score represents the strength of a signal that a monoclonal antibody (MAb) (in combination with a fluorescently-tagged anti-IgG secondary antibody) produces when binding to a particular protein on the HuProtTM array. Z-scores are described in units of standard deviations (SD's) above the mean value of all signals generated on that array. If targets on HuProtTM are arranged in descending order of the Z-score, the S-score is the difference (also in units of SD's) between the Z-score. S-score therefore represents the relative target specificity of a MAb to its intended target; a MAb is considered to be specific to its intended target, if the MAb has an S-score of at least 2.5. For example, if a MAb binds to protein X with a Z-score of 43 and to protein Y with a Z-score of 14, then the S-score for the binding of that MAb to protein X is equal to 29.