

## CCL25 Polyclonal Antibody

<b>Catalog No.</b>	A6543	<b>Category</b>	Polyclonal Antibodies
<b>Applications</b>	WB, IHC, IF	<b>Observed MW</b>	Refer to Figures
<b>Cross-reactivity</b>	Human	<b>Calculated MW</b>	9kDa/16kDa

### Immunogen Information

<b>Immunogen</b>	Recombinant fusion protein containing a sequence corresponding to amino acids 24-150 of human CCL25 (NP_005615.2).
<b>Gene ID</b>	6370
<b>Swiss prot</b>	O15444
<b>Synonyms</b>	CCL25; Ckb15; SCYA25; TECK; C-C motif chemokine 25

### Product information

<b>Source</b>	Rabbit
<b>Isotype</b>	IgG
<b>Purification method</b>	Affinity purification
<b>Storage</b>	Store at -20°C. Avoid freeze / thaw cycles. Buffer: PBS with 0.02% sodium azide, 50% glycerol, pH7.3.

### Background

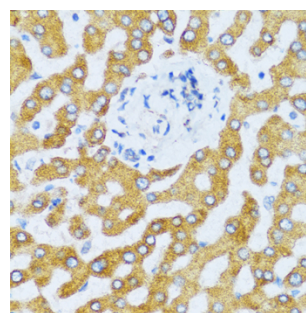
This antimicrobial gene belongs to the subfamily of small cytokine CC genes. Cytokines are a family of secreted proteins involved in immunoregulatory and inflammatory processes. The CC cytokines are proteins characterized by two adjacent cysteines. The cytokine encoded by this gene displays chemotactic activity for dendritic cells, thymocytes, and activated macrophages but is inactive on peripheral blood lymphocytes and neutrophils. The product of this gene binds to chemokine receptor CCR9. Alternative splicing results in multiple transcript variants.

### Recommended Dilutions

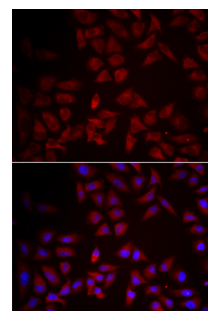
WB 1:500 -  
1:2000

IHC 1:100 -  
1:200

IF 1:50 -  
1:100



Immunohistochemistry - CCL25 Polyclonal Antibody (A6543)



Immunofluorescence - CCL25 Polyclonal Antibody (A6543)