

## ILF3 Polyclonal Antibody

<b>Catalog No.</b>	A14006	<b>Category</b>	Polyclonal Antibodies
<b>Applications</b>	WB	<b>Observed MW</b>	110kDa
<b>Cross-reactivity</b>	Human, Mouse, Rat	<b>Calculated MW</b>	74kDa/75kDa/76kDa/82kDa/95kDa

### Immunogen Information

<b>Immunogen</b>	Recombinant fusion protein containing a sequence corresponding to amino acids 597-706 of human ILF3 (NP_001131145.1).
<b>Gene ID</b>	3609
<b>Swiss prot</b>	Q12906
<b>Synonyms</b>	ILF3; CBTF; DRBF; DRBP76; MMP4; MPHOSPH4; MPP4 ; NF-AT-90; NF110; NF110b; NF90; NF90a; NF90b; NFAR; NFAR-1; NFAR2; TCP110; TCP80; interleukin enhancer-binding factor 3

### Product information

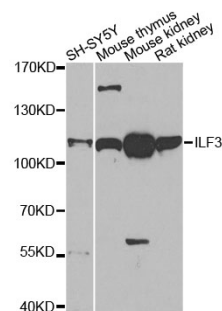
<b>Source</b>	Rabbit
<b>Isotype</b>	IgG
<b>Purification method</b>	Affinity purification
<b>Storage</b>	Store at -20°C. Avoid freeze / thaw cycles. Buffer: PBS with 0.02% sodium azide, 50% glycerol, pH7.3.

### Background

This gene encodes a double-stranded RNA (dsRNA) binding protein that complexes with other proteins, dsRNAs, small noncoding RNAs, and mRNAs to regulate gene expression and stabilize mRNAs. This protein (NF90, ILF3) forms a heterodimer with a 45 kDa transcription factor (NF45, ILF2) required for T-cell expression of interleukin 2. This complex has been shown to affect the redistribution of nuclear mRNA to the cytoplasm. Knockdown of NF45 or NF90 protein retards cell growth, possibly by inhibition of mRNA stabilization. In contrast, an isoform (NF110) of this gene that is predominantly restricted to the nucleus has only minor effects on cell growth when its levels are reduced. Alternative splicing results in multiple transcript variants encoding distinct isoforms.

### Recommended Dilutions

WB 1:500 -  
1:2000



Western blot - ILF3 Polyclonal Antibody (A14006)