

PRDM16 Polyclonal Antibody

Catalog No.	A11581	Category	Polyclonal Antibodies
Applications	WB	Observed MW	120kDa
Cross-reactivity	Human, Mouse	Calculated MW	120kDa/138kDa/140kDa

Immunogen Information

Immunogen	A synthetic peptide of human PRDM16
Gene ID	63976
Swiss prot	Q9HAZ2
Synonyms	PRDM16; CMD1LL; KMT8F; LVNC8; MEL1; PFM13; PR/SET domain 16

Product information

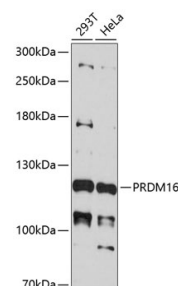
Source	Rabbit
Isotype	IgG
Purification method	Affinity purification
Storage	Store at 4°C. Avoid freeze / thaw cycles. Buffer: PBS with 0.02% sodium azide, pH7.3.

Background

The reciprocal translocation t(1;3)(p36;q21) occurs in a subset of myelodysplastic syndrome (MDS) and acute myeloid leukemia (AML). This gene is located near the 1p36.3 breakpoint and has been shown to be specifically expressed in the t(1;3)(p36;q21)-positive MDS/AML. The protein encoded by this gene is a zinc finger transcription factor and contains an N-terminal PR domain. The translocation results in the overexpression of a truncated version of this protein that lacks the PR domain, which may play an important role in the pathogenesis of MDS and AML. Alternatively spliced transcript variants encoding distinct isoforms have been reported.

Recommended Dilutions

WB 1:500 -
1:1000



Western blot - PRDM16 Polyclonal Antibody (A11581)