

SEPHS1 Polyclonal Antibody

Catalog No.	A6454	Category	Polyclonal Antibodies
Applications	WB, IHC, IF	Observed MW	40kDa
Cross-reactivity	Human, Rat	Calculated MW	35kDa/42kDa

Immunogen Information

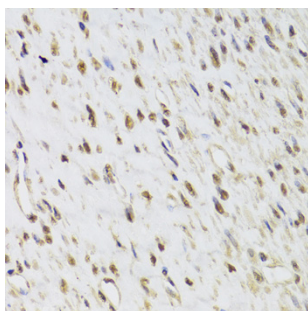
Immunogen	Recombinant fusion protein containing a sequence corresponding to amino acids 1-392 of human SEPHS1 (NP_036379.2).
Gene ID	22929
Swiss prot	P49903
Synonyms	SEPHS1; SELD; SPS; SPS1; selenide, water dikinase 1

Product information

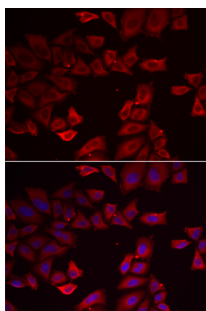
Source	Rabbit
Isotype	IgG
Purification method	Affinity purification
Storage	Store at -20°C. Avoid freeze / thaw cycles. Buffer: PBS with 0.02% sodium azide, 50% glycerol, pH7.3.

Background

This gene encodes an enzyme that synthesizes selenophosphate from selenide and ATP. Selenophosphate is the selenium donor used to synthesize selenocysteine, which is co-translationally incorporated into selenoproteins at in-frame UGA codons.



Immunohistochemistry - SEPHS1 Polyclonal Antibody (A6454)



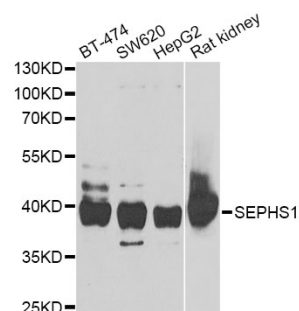
Immunofluorescence - SEPHS1 Polyclonal Antibody (A6454)

Recommended Dilutions

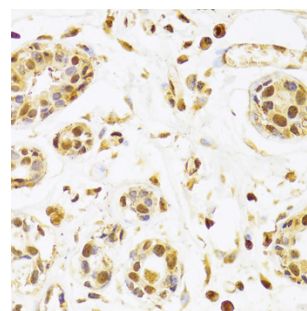
WB 1:500 -
1:2000

IHC 1:50 -
1:200

IF 1:10 -
1:100



Western blot - SEPHS1 Polyclonal Antibody (A6454)



Immunohistochemistry - SEPHS1 Polyclonal Antibody (A6454)