

[KO Validated] CRKL Polyclonal Antibody

Catalog No.	A11735	Category	Polyclonal Antibodies
Applications	WB, IF	Observed MW	37kDa
Cross-reactivity	Human, Mouse, Rat	Calculated MW	33kDa

Immunogen Information

Immunogen	Recombinant fusion protein containing a sequence corresponding to amino acids 1-303 of human CRKL (NP_005198.1).
Gene ID	1399
Swiss prot	P46109
Synonyms	CRKL; crk-like protein

Product information

Source	Rabbit
Isotype	IgG
Purification method	Affinity purification
Storage	Store at -20°C. Avoid freeze / thaw cycles. Buffer: PBS with 0.02% sodium azide, 50% glycerol, pH7.3.

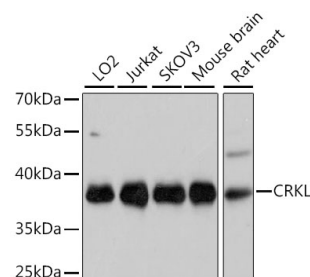
Background

This gene encodes a protein kinase containing SH2 and SH3 (src homology) domains which has been shown to activate the RAS and JUN kinase signaling pathways and transform fibroblasts in a RAS-dependent fashion. It is a substrate of the BCR-ABL tyrosine kinase, plays a role in fibroblast transformation by BCR-ABL, and may be oncogenic.

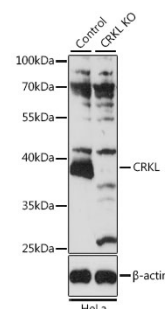
Recommended Dilutions

WB 1:500 -
1:2000

IF 1:50 -
1:200



Western blot - [KO Validated] CRKL Polyclonal Antibody (A11735)



Western blot - [KO Validated] CRKL Polyclonal Antibody (A11735)