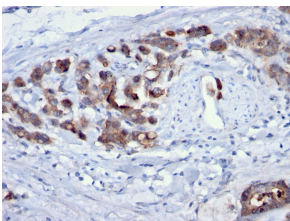


## Anti-CDC20 Antibody [AR12] - BSA and Azide free (A253991)

### Specifications:

Name:	Anti-CDC20 Antibody [AR12] - BSA and Azide free
Description:	Mouse monoclonal [AR12] antibody to CDC20.
Applications:	Flow Cytometry, IF, IHC-P
Recommended Dilutions:	Flow Cytometry: 1-2 µg/million cells, IF: 1-2 µg/ml, IHC-P: 1-2 µg/ml
Reactivity:	Human
Immunogen:	Urea-denatured, recombinant, His-tagged, human CDC20 protein.
Host:	Mouse
Clonality:	Monoclonal
Clone ID:	AR12
Isotype:	IgG1
Light Chains:	kappa
Conjugate:	Unconjugated
Purification:	Protein A/G chromatography.
Concentration:	1 mg/ml
Product Form:	Liquid
Formulation:	Supplied in 10mM Phosphate Buffered Saline; without Sodium Azide and carrier free.
Storage:	Shipped at 4°C. Upon delivery aliquot and store at -20°C. Avoid freeze / thaw cycles.
General Notes:	This monoclonal antibody is also available in a different formulation with BSA and Sodium Azide - Anti-CDC20 Antibody [AR12] (A250811).
Disclaimer:	This product is for research use only. It is not intended for diagnostic or therapeutic use.

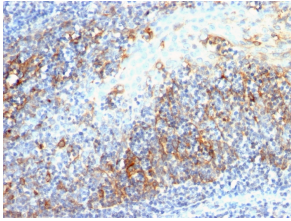
### Images:



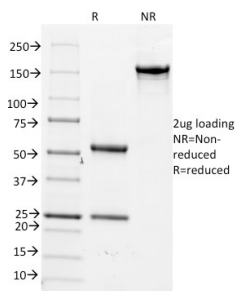
Immunohistochemical analysis of formalin-fixed, paraffin-embedded human gastric carcinoma using Anti-CDC20 Antibody [AR12].

## Anti-CDC20 Antibody [AR12] - BSA and Azide free (A253991)

Images continued:



Immunohistochemical analysis of formalin-fixed, paraffin-embedded human tonsil using Anti-CDC20 Antibody [AR12].



SDS-PAGE analysis of Anti-CDC20 Antibody [AR12] under non-reduced and reduced conditions; showing intact IgG and intact heavy and light chains, respectively. SDS-PAGE analysis confirms the integrity and purity of the antibody.