

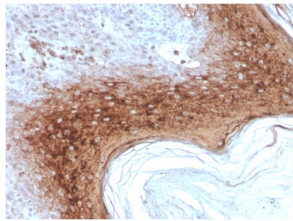
Anti-Involucrin Antibody [rIVRN/827] (A249091)

Specifications:

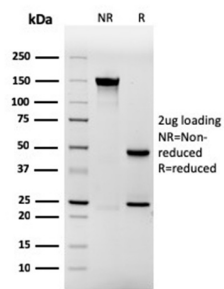
Name:	Anti-Involucrin Antibody [rIVRN/827]
Description:	Recombinant mouse monoclonal [rIVRN/827] antibody to Involucrin.
Specificity:	The epitope of this antibody is between amino acids 421-568 of human involucrin. It stains involucrin in a variety of sizes (66-170 kDa): 120 kDa in human keratinocytes, 170 kDa in MCF-7 cells, a doublet of ~115 kDa and 150 kDa in gorilla / owl monkey, and 66 kDa in dog.
Applications:	IHC-P
Recommended Dilutions:	IHC-P: 0.1-0.2 µg/ml
Reactivity:	Human, Gorilla, Owl Monkey, Porcine, Canine
Cross Reactivity:	This antibody does not cross react with Mouse.
Immunogen:	Recombinant full-length human Involucrin protein.
Host:	Mouse
Clonality:	Monoclonal
Clone ID:	rIVRN/827
Isotype:	IgG1
Light Chains:	kappa
Conjugate:	Unconjugated
Purification:	Protein A/G chromatography.
Concentration:	200 µg/ml
Product Form:	Liquid
Formulation:	Supplied in 10mM Phosphate Buffered Saline with 0.05% BSA and 0.05% Sodium Azide.
Storage:	Shipped at 4°C. Upon delivery aliquot and store at -20°C. Avoid freeze / thaw cycles.
General Notes:	This monoclonal antibody is also available in a different formulation without BSA and Sodium Azide - Anti-Involucrin Antibody [rIVRN/827] - BSA and Azide free (A252271).
Disclaimer:	This product is for research use only. It is not intended for diagnostic or therapeutic use.

Anti-Involucrin Antibody [rIVRN/827] (A249091)

Images:



Immunohistochemical analysis of formalin-fixed, paraffin-embedded human skin using Anti-Involucrin Antibody [rIVRN/827].



SDS-PAGE analysis of Anti-Involucrin Antibody [rIVRN/827] under non-reduced and reduced conditions; showing intact IgG and intact heavy and light chains, respectively. SDS-PAGE analysis confirms the integrity and purity of the antibody.