

## MAP1LC3A Monoclonal Antibody

<b>Catalog No.</b>	A11428	<b>Category</b>	Monoclonal Antibodies
<b>Applications</b>	WB, IHC, IF, IP	<b>Observed MW</b>	14kDa
<b>Cross-reactivity</b>	Human, Mouse, Rat	<b>Calculated MW</b>	14kDa

### Immunogen Information

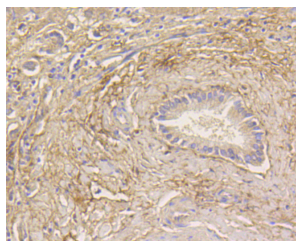
<b>Immunogen</b>	Recombinant protein of human MAP1LC3A
<b>Gene ID</b>	84557
<b>Swiss prot</b>	Q9H492
<b>Synonyms</b>	MAP1LC3A; ATG8E; LC3; LC3A; MAP1ALC3; MAP1BLC3 ; microtubule-associated proteins 1A/1B light chain 3A

### Product information

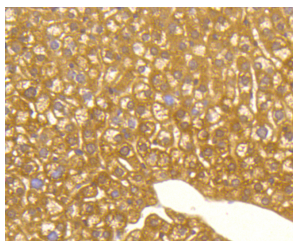
<b>Source</b>	Rabbit
<b>Isotype</b>	IgG
<b>Purification method</b>	Affinity purification
<b>Storage</b>	Store at -20°C. Avoid freeze / thaw cycles. Buffer: PBS with 0.02% sodium azide, 50% glycerol, pH7.3.

### Background

MAP1A and MAP1B are microtubule-associated proteins which mediate the physical interactions between microtubules and components of the cytoskeleton. MAP1A and MAP1B each consist of a heavy chain subunit and multiple light chain subunits. The protein encoded by this gene is one of the light chain subunits and can associate with either MAP1A or MAP1B. Two transcript variants encoding different isoforms have been found for this gene. The expression of variant 1 is suppressed in many tumor cell lines, suggesting that may be involved in carcinogenesis.



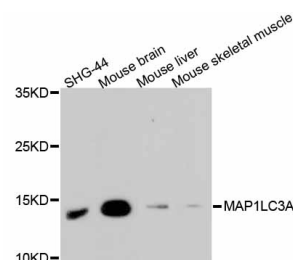
Immunohistochemistry - MAP1LC3A Monoclonal Antibody (A11428)



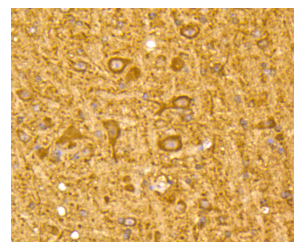
Immunohistochemistry - MAP1LC3A Monoclonal Antibody (A11428)

### Recommended Dilutions

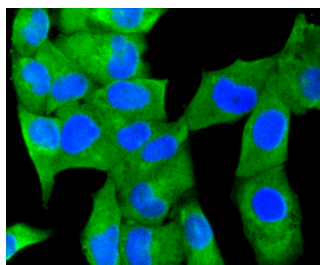
WB 1:500 -  
1:2000  
IHC 1:50 -  
1:200  
IF 1:50 -  
1:200  
IP 1:20 - 1:50



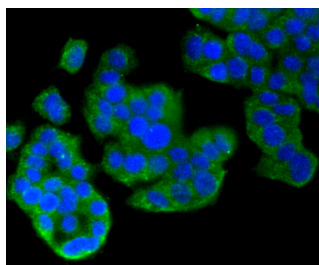
Western blot - MAP1LC3A Monoclonal Antibody (A11428)



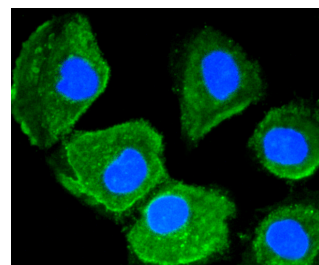
Immunohistochemistry - MAP1LC3A Monoclonal Antibody (A11428)



Immunofluorescence - MAP1LC3A  
Monoclonal Antibody (A11428)



Immunofluorescence - MAP1LC3A  
Monoclonal Antibody (A11428)



Immunofluorescence - MAP1LC3A  
Monoclonal Antibody (A11428)