

## CRY2 Polyclonal Antibody

<b>Catalog No.</b>	A3809	<b>Category</b>	Polyclonal Antibodies
<b>Applications</b>	WB, IHC	<b>Observed MW</b>	68kDa
<b>Cross-reactivity</b>	Human, Mouse	<b>Calculated MW</b>	60kDa/66kDa

### Immunogen Information

<b>Immunogen</b>	A synthetic peptide of human CRY2
<b>Gene ID</b>	1408
<b>Swiss prot</b>	Q49AN0
<b>Synonyms</b>	CRY2; HCRY2; PHLL2; cryptochrome-2

### Product information

<b>Source</b>	Rabbit
<b>Isotype</b>	IgG
<b>Purification method</b>	Affinity purification
<b>Storage</b>	Store at 4°C. Avoid freeze / thaw cycles. Buffer: PBS with 0.02% sodium azide, pH7.3.

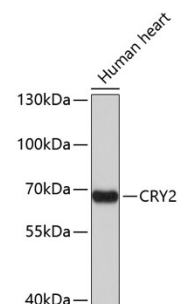
### Background

This gene encodes a flavin adenine dinucleotide-binding protein that is a key component of the circadian core oscillator complex, which regulates the circadian clock. This gene is upregulated by CLOCK/ARNTL heterodimers but then represses this upregulation in a feedback loop using PER/CRY heterodimers to interact with CLOCK/ARNTL. Polymorphisms in this gene have been associated with altered sleep patterns. The encoded protein is widely conserved across plants and animals. Two transcript variants encoding different isoforms have been found for this gene.

### Recommended Dilutions

WB 1:500 -  
1:1000

IHC 1:50 -  
1:100



Western blot - CRY2 Polyclonal Antibody (A3809)