

RPA716Hu01 50µg

Recombinant Glucose-6-phosphate Dehydrogenase (G6PD)

Organism Species: *Homo sapiens (Human)*

Instruction manual

FOR RESEARCH USE ONLY

NOT FOR USE IN CLINICAL DIAGNOSTIC PROCEDURES

13th Edition (Revised in Aug, 2023)

[PROPERTIES]

Source: Prokaryotic expression

Host: *E.coli*

Residues: Met1~Leu515

Tags: N-terminal His Tag

Subcellular Location: Secreted

Purity: > 95%

Traits: Freeze-dried powder

Buffer formulation: PBS, pH7.4, containing 0.01% SKL, 5% Trehalose .

Original Concentration: 250µg/mL

Applications: Positive Control; Immunogen; SDS-PAGE; WB.

(May be suitable for use in other assays to be determined by the end user.)

Predicted isoelectric point: 6.5

Predicted Molecular Mass: 60.5kDa

Accurate Molecular Mass: 60kDa as determined by SDS-PAGE reducing conditions.

[USAGE]

Reconstitute in 10mM PBS (pH7.4) to a concentration of 0.1-1.0 mg/mL. Do not vortex.

[STORAGE AND STABILITY]

Storage: Avoid repeated freeze/thaw cycles.

Store at 2-8°C for one month.

Aliquot and store at -80°C for 12 months.

Stability Test: The thermal stability is described by the loss rate. The loss rate was determined by accelerated thermal degradation test, that is, incubate the protein at 37°C for 48h, and no obvious degradation and precipitation were observed. The loss rate is less than 5% within the expiration date under appropriate storage condition.

[SEQUENCE]

MAEQVALSRT QVCGILREEL FQGDAFHQSD THIFIIMGAS GDLAKKKIYP TIWWLFRDGL
 LPENTFIVGY ARSRLTVADI RKQSEPPFFKA TPEEKLKLED FFARNSYVAG QYDDAASYQR
 LNSHMNALHL GSQANRLFYL ALPPTVYEAV TKNIHESCMS QIGWNRRIIVE KPFGRDLQSS
 DRLSNHISSL FREDQIYRID HYLKEMVQN LMVLRFANRI FGPIWNRDNI ACVILTFKEP
 FGTEGRGGYF DEFGIIRDVM QNHLLQMLCL VAMEKPASTN SDDVRDEKVK VLKCISEVQA
 NNVVLGQYVG NPDGEGEATK GYLDDPTVPR GSTTATFAAV VLYVENERWD GVPFILRCGK
 ALNERKAEVR LQFHVDVAGDI FHQQCKRNEL VIRVQPNEAV YTKMMTKKPG MFFNPEESEL
 DLTYGNRYKN VKLPDAYERL ILDVFCGSQM HFVRSDELRE AWRIFTPLLH QIELEKPKPI
 PYYGSRGPT EADELMKRVG FQYEGTYKWV NPHKL

[IDENTIFICATION]

ATGCGCAGCGAGGTGGCCCTGACCCGGACCCAGGTGTGCGGGATCCTCGGGAGAGCTTTTTCAGGCGATCCCTTCATCAGTCCGATACACACATATTCATCATCATGGGTCCATCCGGGTGACCTTGGCCAGAGAGAGATCTTACCCGACATCTGGTGGCTGTTCGGGATGCGCTTCTCCCGAAGACCTTCATCGTGGCTAT
 N A E Q V A L S R T Q V C G I L R E E L F Q G D A F H Q S D T H I F I I M G A S G D L A K K K I Y P T I W W L F R D G L I P E N T F I V G Y

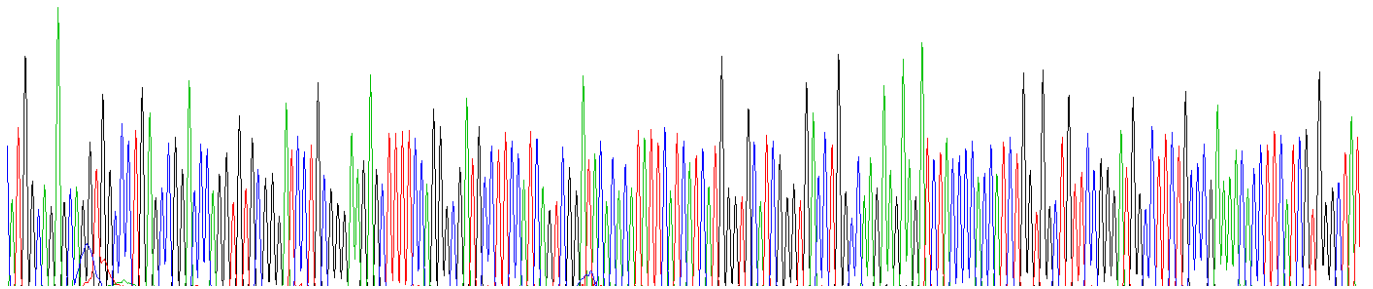
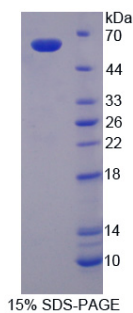


Figure. Gene Sequencing (Extract)



[IMPORTANT NOTE]

The kit is designed for research use only, we will not be responsible for any issue if the kit was used in clinical diagnostic or any other procedures.