

NMD3 Polyclonal Antibody

Catalog No.	A4707	Category	Polyclonal Antibodies
Applications	WB	Observed MW	57kDa
Cross-reactivity	Human, Mouse	Calculated MW	57kDa

Immunogen Information

Immunogen	A synthetic peptide of human NMD3
Gene ID	51068
Swiss prot	Q96D46
Synonyms	NMD3; CGI-07; NMD3 ribosome export adaptor

Product information

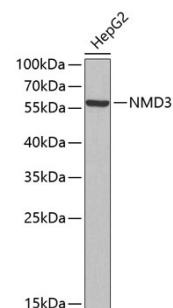
Source	Rabbit
Isotype	IgG
Purification method	Affinity purification
Storage	Store at 4°C. Avoid freeze / thaw cycles. Buffer: PBS with 0.02% sodium azide, pH7.3.

Background

Ribosomal 40S and 60S subunits associate in the nucleolus and are exported to the cytoplasm. The protein encoded by this gene is involved in the passage of the 60S subunit through the nuclear pore complex and into the cytoplasm. Several transcript variants exist for this gene, but the full-length nature of only two have been described to date.

Recommended Dilutions

WB 1:500 -
1:2000



Western blot - NMD3 Polyclonal Antibody (A4707)