

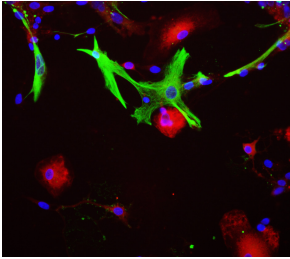
## Anti-Aldolase A + Aldolase B + Aldolase C Antibody [E9] (A85386)

### Specifications:

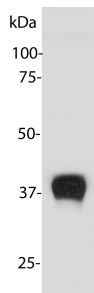
Name:	Anti-Aldolase A + Aldolase B + Aldolase C Antibody [E9]
Description:	Mouse monoclonal (E9) antibody to Aldolase A + Aldolase B + Aldolase C.
Specificity:	This antibody binds to Aldolase A, Aldolase B, and Aldolase C with equal specificity. The epitope for this antibody is mapped to the peptide YKKDGADFAKWRCVLKISER, amino acids 138-157 of human Aldolase C (1XFB_A).
Applications:	WB, ICC/IF, IHC
Recommended Dilutions:	WB: 1:10,000, ICC/IF: 1:1,000-1:5,000, IHC: 1:1,000-1:5,000
Reactivity:	Human, Rat, Mouse
Immunogen:	Recombinant full-length human Aldolase C, expressed in and purified from E. coli.
Host:	Mouse
Clonality:	Monoclonal
Clone ID:	E9
Isotype:	IgG1
Conjugate:	Unconjugated
Purification:	Immunogen affinity purification.
Concentration:	1 mg/ml
Molecular Weight:	40 kDa
Product Form:	Liquid
Formulation:	Supplied in Phosphate Buffered Saline with 50% Glycerol and 5mM Sodium Azide.
Storage:	Shipped at 4°C. Upon delivery aliquot and store at -20°C. Avoid freeze / thaw cycles.
Disclaimer:	This product is for research use only. It is not intended for diagnostic or therapeutic use.

## Anti-Aldolase A + Aldolase B + Aldolase C Antibody [E9] (A85386)

### Images:



View of mixed neuron/glia cultures stained with Anti-Aldolase C Antibody (red) and Anti-GFAP Antibody (A85307 | green). Anti-Aldolase C Antibody reveals strong cytoplasmic staining in astrocytes. Blue is a DNA stain. Anti-Aldolase C Antibody stains the astrocytes cell body and processes, whereas Anti-GFAP Antibody labels the intermediate filament of the cytoskeleton in subset of astrocytes.



Blots of rat brain lysate blotted with Anti-Aldolase C Antibody. The Anti-Aldolase C Antibody binds strongly and cleanly to a band at about 40 kDa. We now know that this antibody binds to an epitope shared by the closely related Aldolase A, B and C, recognizing all three on western blots.