

## [KO Validated] SIRT3 Polyclonal Antibody

<b>Catalog No.</b>	A5718	<b>Category</b>	Polyclonal Antibodies
<b>Applications</b>	WB, IHC	<b>Observed MW</b>	28kDa
<b>Cross-reactivity</b>	Human, Mouse, Rat	<b>Calculated MW</b>	28kDa/43kDa

### Immunogen Information

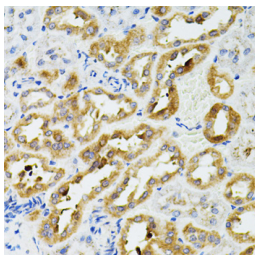
<b>Immunogen</b>	A synthetic peptide corresponding to a sequence within amino acids 300 to the C-terminus of human SIRT3 (NP_036371.1).
<b>Gene ID</b>	23410
<b>Swiss prot</b>	Q9NTG7
<b>Synonyms</b>	SIRT3; SIR2L3; sirtuin 3

### Product information

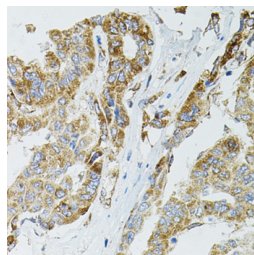
<b>Source</b>	Rabbit
<b>Isotype</b>	IgG
<b>Purification method</b>	Affinity purification
<b>Storage</b>	Store at -20°C. Avoid freeze / thaw cycles. Buffer: PBS with 0.02% sodium azide, 50% glycerol, pH7.3.

### Background

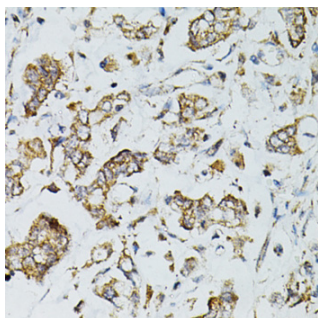
This gene encodes a member of the sirtuin family of proteins, homologs to the yeast Sir2 protein. Members of the sirtuin family are characterized by a sirtuin core domain and grouped into four classes. The functions of human sirtuins have not yet been determined; however, yeast sirtuin proteins are known to regulate epigenetic gene silencing and suppress recombination of rDNA. Studies suggest that the human sirtuins may function as intracellular regulatory proteins with mono-ADP-ribosyltransferase activity. The protein encoded by this gene is included in class I of the sirtuin family. Two alternatively spliced transcript variants that encode different proteins have been described for this gene.



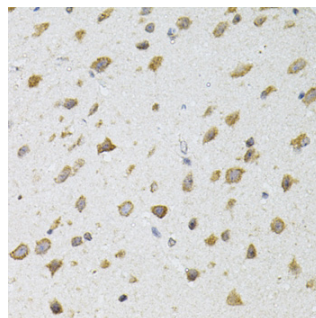
Immunohistochemistry - [KO Validated] SIRT3 Polyclonal Antibody (A5718)



Immunohistochemistry - [KO Validated] SIRT3 Polyclonal Antibody (A5718)



Immunohistochemistry - [KO Validated] SIRT3 Polyclonal Antibody (A5718)

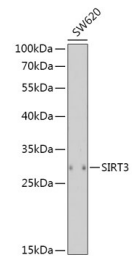


Immunohistochemistry - [KO Validated] SIRT3 Polyclonal Antibody (A5718)

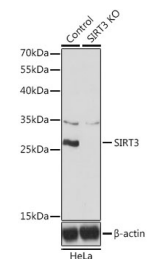
### Recommended Dilutions

WB 1:500 -  
1:1000

IHC 1:20 - 1:50



Western blot - [KO Validated] SIRT3 Polyclonal Antibody (A5718)



Western blot - [KO Validated] SIRT3 Polyclonal Antibody (A5718)