

## MYBL2 Polyclonal Antibody

<b>Catalog No.</b>	A3310	<b>Category</b>	Polyclonal Antibodies
<b>Applications</b>	WB	<b>Observed MW</b>	72kDa
<b>Cross-reactivity</b>	Human, Mouse	<b>Calculated MW</b>	75kDa/78kDa

### Immunogen Information

<b>Immunogen</b>	A synthetic peptide of human MYBL2
<b>Gene ID</b>	4605
<b>Swiss prot</b>	P10244
<b>Synonyms</b>	MYBL2; B-MYB; BMYB; myb-related protein B

### Product information

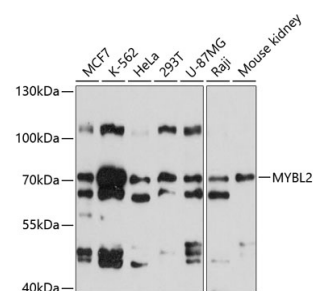
<b>Source</b>	Rabbit
<b>Isotype</b>	IgG
<b>Purification method</b>	Affinity purification
<b>Storage</b>	Store at 4°C. Avoid freeze / thaw cycles. Buffer: PBS with 0.02% sodium azide, pH7.3.

### Background

The protein encoded by this gene, a member of the MYB family of transcription factor genes, is a nuclear protein involved in cell cycle progression. The encoded protein is phosphorylated by cyclin A/cyclin-dependent kinase 2 during the S-phase of the cell cycle and possesses both activator and repressor activities. It has been shown to activate the cell division cycle 2, cyclin D1, and insulin-like growth factor-binding protein 5 genes. Two transcript variants encoding different isoforms have been found for this gene.

### Recommended Dilutions

WB 1:500 -  
1:1000



Western blot - MYBL2 Polyclonal Antibody (A3310)