

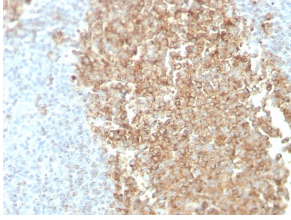
Anti-CDw75 Antibody [ZB55] - BSA and Azide free (A254339)

Specifications:

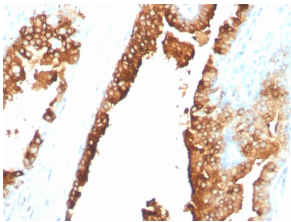
Name:	Anti-CDw75 Antibody [ZB55] - BSA and Azide free
Description:	Mouse monoclonal [ZB55] antibody to CDw75.
Specificity:	This antibody recognizes a neuraminidase-sensitive sialoprotein (CDw75), present on cell membrane and cytoplasm of germinal center B-cells and derived lymphomas. This MAb reacts with RBC precursors of bone marrow, ductal and ciliated epithelial cells of kidney, breast, prostate, pancreas, lung, and with glioblastomas, astrocytomas, and Reed Sternberg cells in lymphocyte predominant Hodgkin s disease. It is shown to be a helpful antibody for ascribing a B-cell phenotype in known lymphoid tissues.
Applications:	Flow Cytometry, IF, IHC-P
Recommended Dilutions:	Flow Cytometry: 1-2 µg/million cells, IF: 1-2 µg/ml, IHC-P: 1-2 µg/ml
Reactivity:	Human
Immunogen:	CD32 peptides.
Host:	Mouse
Clonality:	Monoclonal
Clone ID:	ZB55
Isotype:	IgM
Light Chains:	kappa
Conjugate:	Unconjugated
Purification:	PEG precipitation.
Concentration:	1 mg/ml
Product Form:	Liquid
Formulation:	Supplied in 10mM Phosphate Buffered Saline; without Sodium Azide and carrier free.
Storage:	Shipped at 4°C. Upon delivery aliquot and store at -20°C. Avoid freeze / thaw cycles.
General Notes:	This monoclonal antibody is also available in a different formulation with BSA and Sodium Azide - Anti-CDw75 Antibody [ZB55] (A251062).
Disclaimer:	This product is for research use only. It is not intended for diagnostic or therapeutic use.

Anti-CDw75 Antibody [ZB55] - BSA and Azide free (A254339)

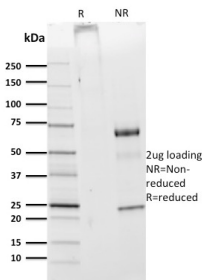
Images:



Immunohistochemical analysis of formalin-fixed, paraffin-embedded normal human spleen tissue using Anti-CDw75 Antibody [ZB55].



Immunohistochemical analysis of formalin-fixed, paraffin-embedded normal human spleen tissue using Anti-CDw75 Antibody [ZB55].



SDS-PAGE analysis of Anti-CDw75 Antibody [ZB55] under non-reduced and reduced conditions; showing intact IgG and intact heavy and light chains, respectively. SDS-PAGE analysis confirms the integrity and purity of the antibody.